

# For patients taking ISENTRESS<sup>®</sup> Tablet 400mg



# Table of Contents

**Introduction** ..... 3

## About ISENTRESS® Tablet 400mg

Administration method (dosage and administration) ..... 4  
 Adverse drug reactions ..... 5  
 Use during pregnancy and breastfeeding ..... 5

## Administration of ISENTRESS® Tablet 400mg

Instructions for administration ..... 6  
 Concomitant drugs ..... 6

## Before switching to ISENTRESS® Tablet 400mg

I have previously experienced an adverse reaction to ISENTRESS® Tablet 400mg ... 7  
 I have tried taking other anti-HIV drugs, but I didn't feel better ..... 7

## Important points to remember about treating your disease

Do any of these situations sound familiar? ..... 8

## Your new medication habits ..... 14

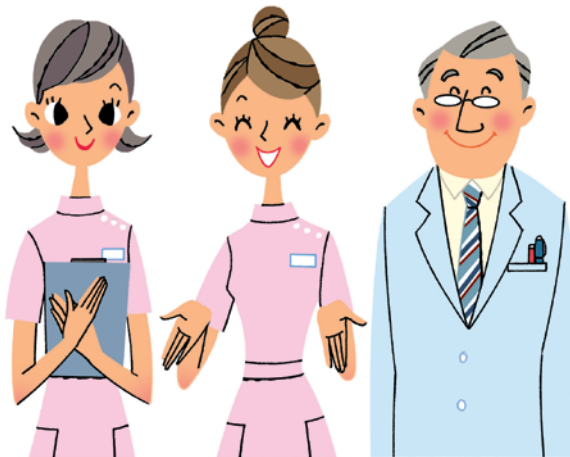
### MEMO

Your current medication habits

Drugs used with ISENTRESS® Tablet 400mg

# Introduction

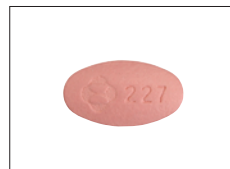
Many patients living with HIV can have various problems with taking their medications. For example, your drugs might become ineffective over time, or you might not be able to tolerate treatment due to adverse reactions. In such situations, ISENTRESS® Tablet 400mg can be used as replacement therapy to prevent proliferation of the virus. If you have any questions about adverse reactions or the method of administration, please ask your doctor without hesitation. Don't worry, you are not alone - medical professionals always want to help you to treat your disease.



# About ISENTRESS® Tablet 400mg

Brand name : ISENTRESS® Tablet 400 mg

Generic name: raltegravir potassium (RAL)



Full-size

ISENTRESS® Tablet 400mg belongs to a class of drugs called integrase inhibitors.

## Administration method (dosage and administration)

ISENTRESS® Tablet 400mg is always prescribed in combination with other drugs.

Take one tablet of ISENTRESS® Tablet 400mg twice daily, with or without food.

## Adverse drug reactions

Major adverse drug reactions include nausea, headache, and insomnia.

You may also experience adverse reactions to other drugs you are using. If you notice any change in your condition, please tell your doctor or pharmacist.



## Pregnancy and breastfeeding

If you are pregnant or suspect you may be pregnant, please seek the advice of your doctor before taking ISENTRESS® Tablet 400mg.

Avoid breastfeeding when you are using ISENTRESS® Tablet 400mg.



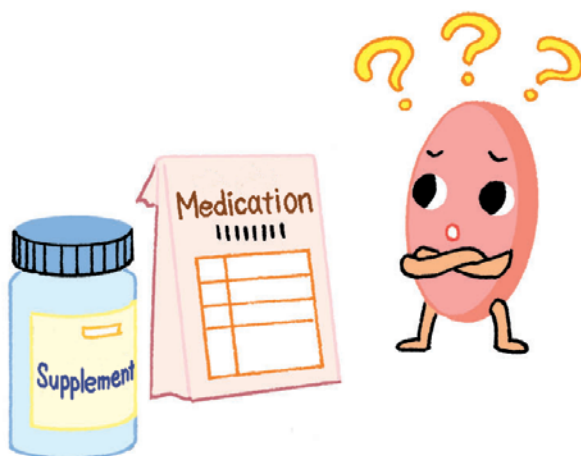
# Administration of ISENTRESS® Tablet 400mg

## Instructions for administration

You can take ISENTRESS® Tablet 400mg with or without food. You should take ISENTRESS® Tablet 400mg twice daily, once in the morning and once in the evening, to avoid missing any doses.

## Concomitant drugs

Before you start taking ISENTRESS® Tablet 400mg, if you are already taking other drugs and/or supplements, please inform your doctor of the names of these medications.



# Before switching to ISENTRESS<sup>®</sup> Tablet 400mg

## **I have previously experienced an adverse drug reaction to ISENTRESS<sup>®</sup> Tablet 400mg**

Some patients might not be able to tolerate ISENTRESS<sup>®</sup> Tablet 400mg due to adverse drug reactions. If you notice any changes in your condition after taking ISENTRESS<sup>®</sup> Tablet 400mg, please contact a medical professional immediately.

## **I have tried taking other anti-HIV drugs, but I didn't feel better.**

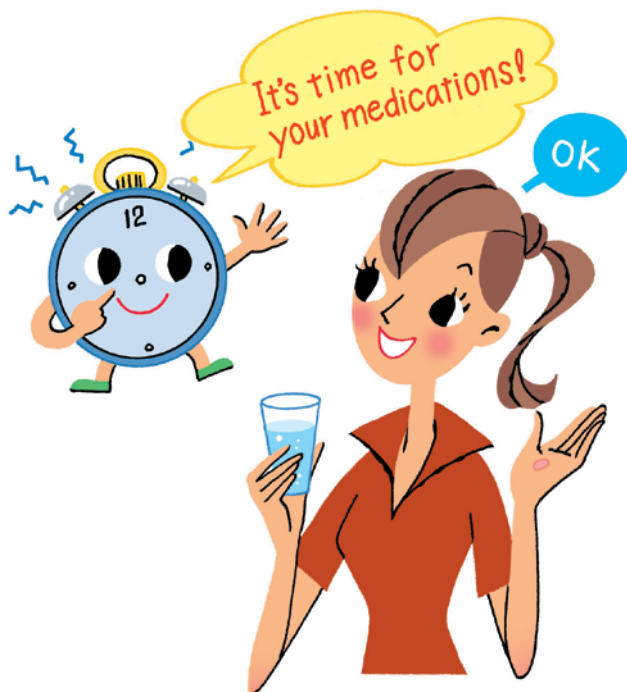
ISENTRESS<sup>®</sup> Tablet 400mg has been demonstrated to be effective for some patients who have shown no response to other drugs. It might take quite a long time for ISENTRESS<sup>®</sup> Tablet 400mg to exert its efficacy, despite your compliance with dosing instructions. You should undergo regular medical examinations and ask your doctor to check how effective ISENTRESS<sup>®</sup> Tablet 400mg is for you.

# Important points to remember — Do any of these situations

## I sometimes forget to take my medications.

You should make it a rule to take your medications as part of daily life. It is also important to become accustomed to taking medications at regular times every day, e.g., once in the morning and once in the evening.

If you live with a partner or with your family, please ask them to remind you to take your medications.





# about treating your disease sound familiar?

## I eat at irregular times and I don't know when I should take my medications.

You can take ISENTRESS® Tablet 400mg either with or without food. You don't have to synchronize taking ISENTRESS® Tablet 400mg with eating, so you can make your own dosing schedule.

Because this may not be true for other drugs, please check the correct administration method for any other drugs you are taking.



# Important points to remember — Do any of these situations

**I sometimes take my medications at the wrong time because I need to take multiple drugs with different dosing schedules.**

Here is a tip to solve this problem: use a pill case to organize your daily medications.

If you feel it is difficult to adhere to your regimen, ask your doctor, pharmacist, or nurse for advice. You can get good ideas to help you through discussion.



# about treating your disease sound familiar?

## I sometimes stop taking my medications, depending on my mood.

If you stop taking your medications for any reason, your treatment may lose its effectiveness and viral proliferation may increase.

Remember how you felt when you got your first prescription.

Try to maintain the strong will to fight your disease that you had at the start of therapy.



# Important points to remember — Do any of these situations

## **I am quite often too busy to take my medications.**

Symptoms of HIV infection are inhibited by your medications. Although taking medications at regular times every day may seem bothersome, it is better to think of it as just one of your daily activities.

Regular treatment will bring you a more comfortable daily life.

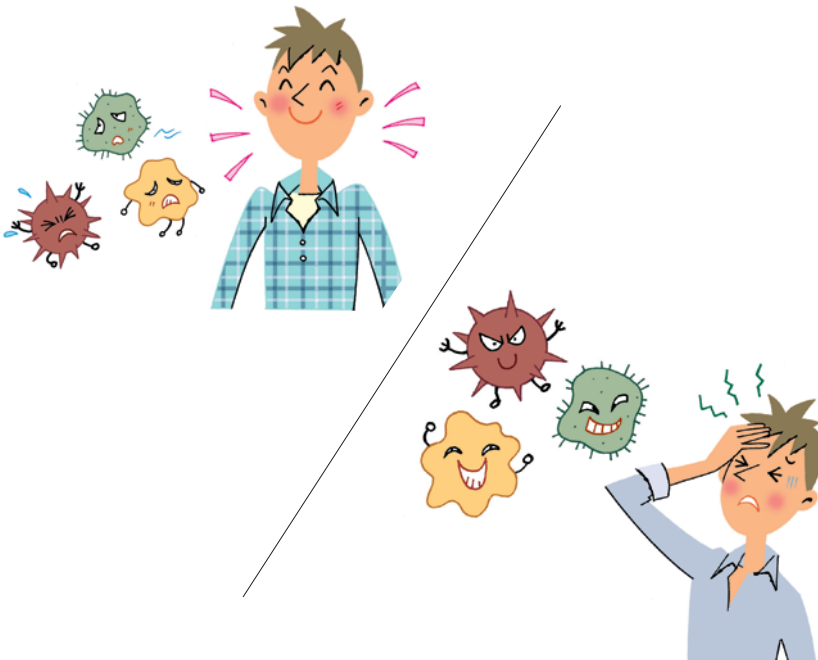


# about treating your disease sound familiar?

## I only take medications when I feel bad and stop when I feel good.

Your medications are likely to become ineffective if you continuously stop and resume taking them instead of following a regular regimen.

It is important to comply with your doctor's or pharmacist's instructions about taking medications.



# Your new medication habits

## Develop good medication habits when using ISENTRESS<sup>®</sup> Tablet 400mg.

- Be careful not to forget to take your medications.
- Decide a fixed dosing schedule for your medications.
- Sort your medications so that you clearly know when and how to take each one, since some drugs need to be taken in different ways.
- Try to maintain the strong will to fight your disease that you had at the start of therapy.



---

---

# MEMO

A series of horizontal dashed lines for writing, spanning most of the page width.



# Drugs used with ISENTRESS<sup>®</sup> Tablet 400mg

## ISENTRESS<sup>®</sup> Tablet 400mg



### Administration method

- One tablet is taken twice daily  
- You can take ISENTRESS<sup>®</sup> Tablet 400mg with or without food.

List your concomitant medications below.



Tear off along dotted line.

-----  
-----  
-----  
-----  
-----  
-----  
-----  
-----  
-----  
-----

-----  
-----  
-----  
-----  
-----  
-----  
-----  
-----  
-----  
-----



# Your current medication habits

Review your current medication habits before starting treatment with ISENTRESS® Tablet 400mg.

<b>How long have you been receiving treatment for HIV infection?</b>	<input type="checkbox"/> < 1 year <input type="checkbox"/> < 3 years <input type="checkbox"/> < 5 years <input type="checkbox"/> ≥ 5 years
<b>How often did you miss or skip doses in the past?</b>	<input type="checkbox"/> Once a month <input type="checkbox"/> Twice or three times a month <input type="checkbox"/> Once a week <input type="checkbox"/> Several times a week
<b>If you have ever missed a dose, what was the reason?</b>	<input type="checkbox"/> I forgot to take my medications. <input type="checkbox"/> I didn't know when I should have taken my medications. <input type="checkbox"/> I was confused because some medications had to be taken at different times. <input type="checkbox"/> I was too busy. <input type="checkbox"/> I experienced an adverse reaction. <input type="checkbox"/> Taking medications was troublesome. <input type="checkbox"/> I felt healthy. <input type="checkbox"/> Other reasons ( )

Tear off along dotted line.

Please consult your doctor or other medical professional for advice about the best way to take all your medications, including ISENTRESS® Tablet 400mg.

